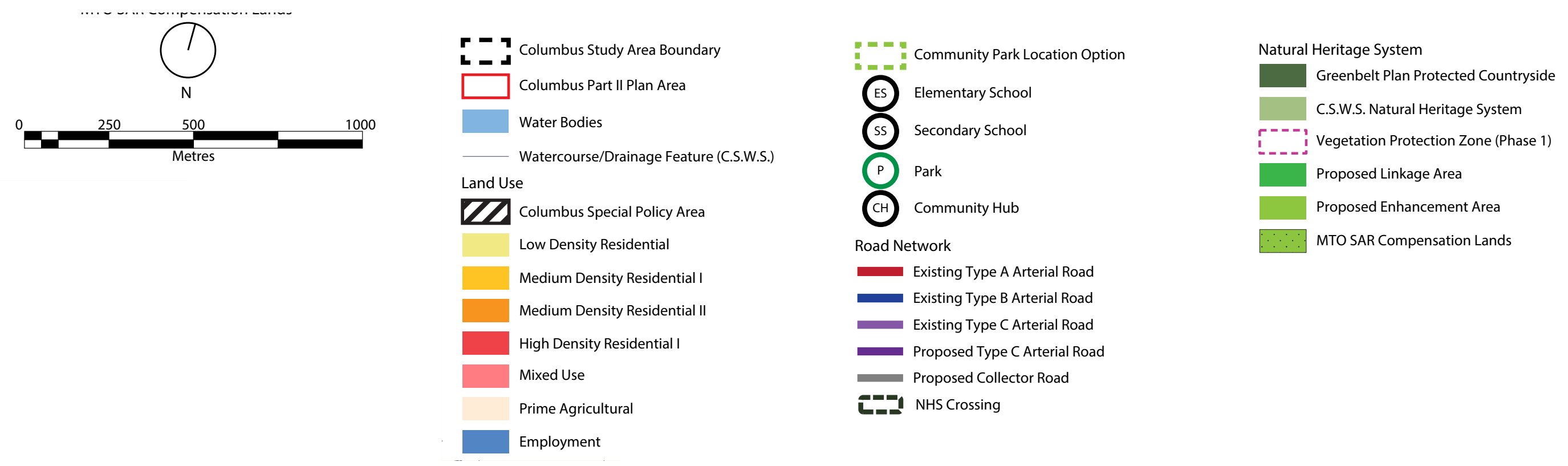
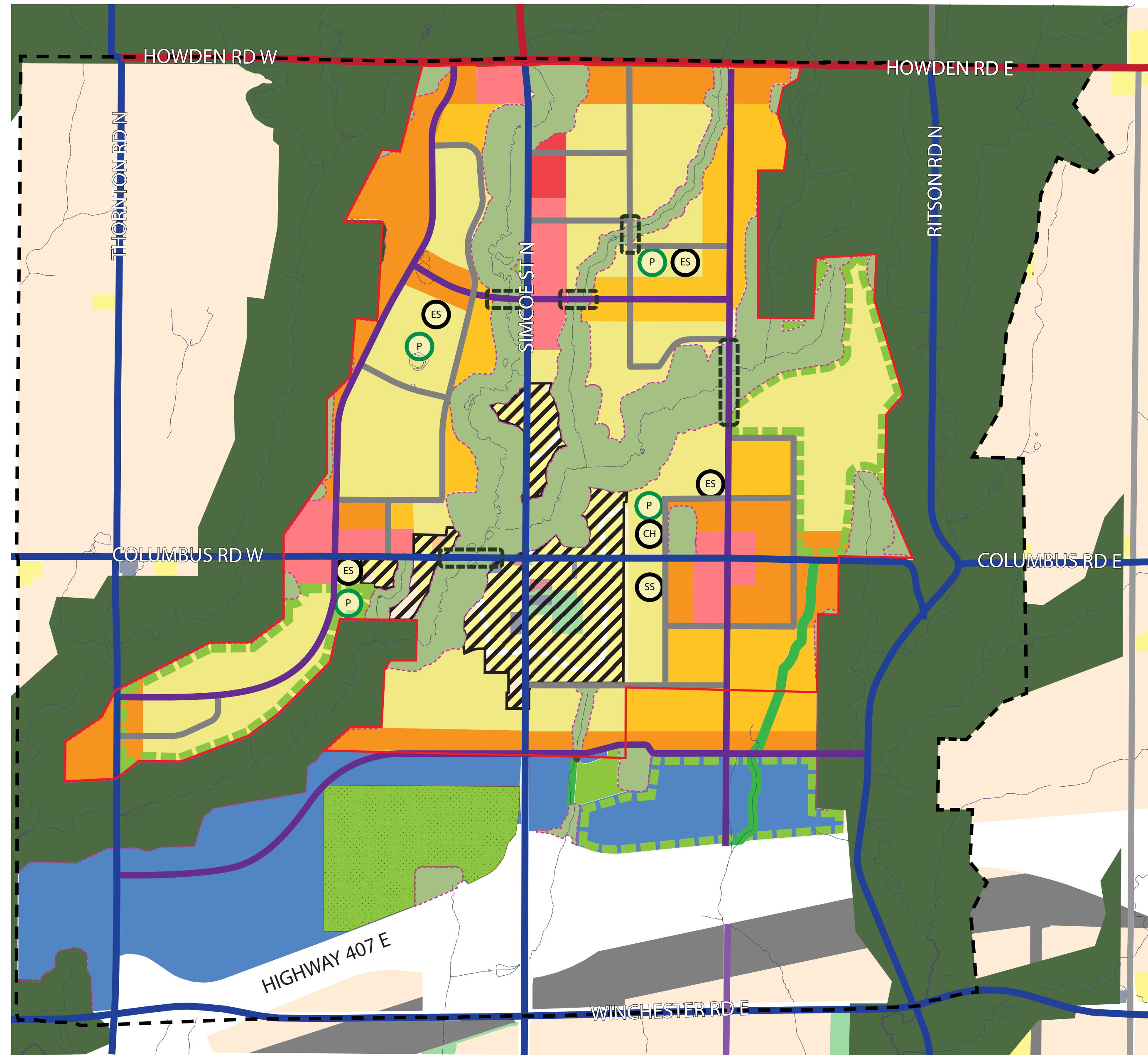


PUBLIC INFORMATION CENTRE #3 - ALTERNATIVES

INTEGRATED COLUMBUS PART II PLANNING ACT & MUNICIPAL CLASS ENVIRONMENTAL ASSESSMENT ACT STUDY



ALTERNATIVE 1



In your groups, evaluate Alternative 1 based on the following categories. Assign a note taker to record key discussion points and comments made.

ROAD NETWORK

Are the locations and configurations of the roads appropriate? Why or why not?

LAND USES

Are the locations and types of land uses appropriate? Why or why not? Is anything missing? What are your thoughts on the land uses directly surrounding the Special Policy Area?

PARKS AND SCHOOLS

Are the locations and types of parks and schools appropriate? Why or why not? What is your preferred Community Park location? Why?

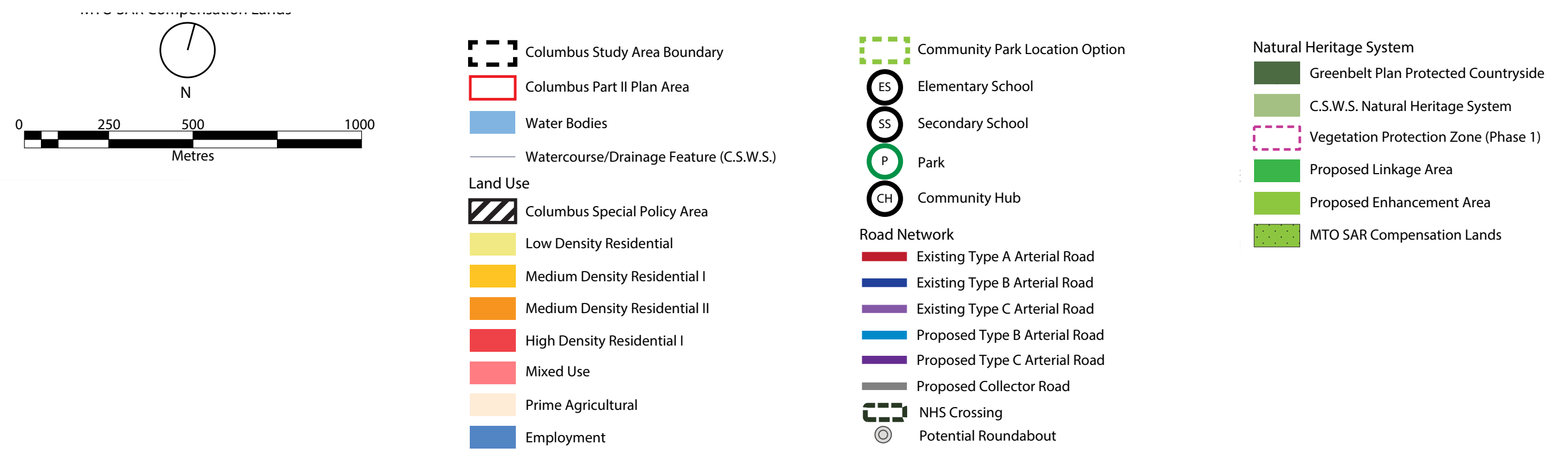
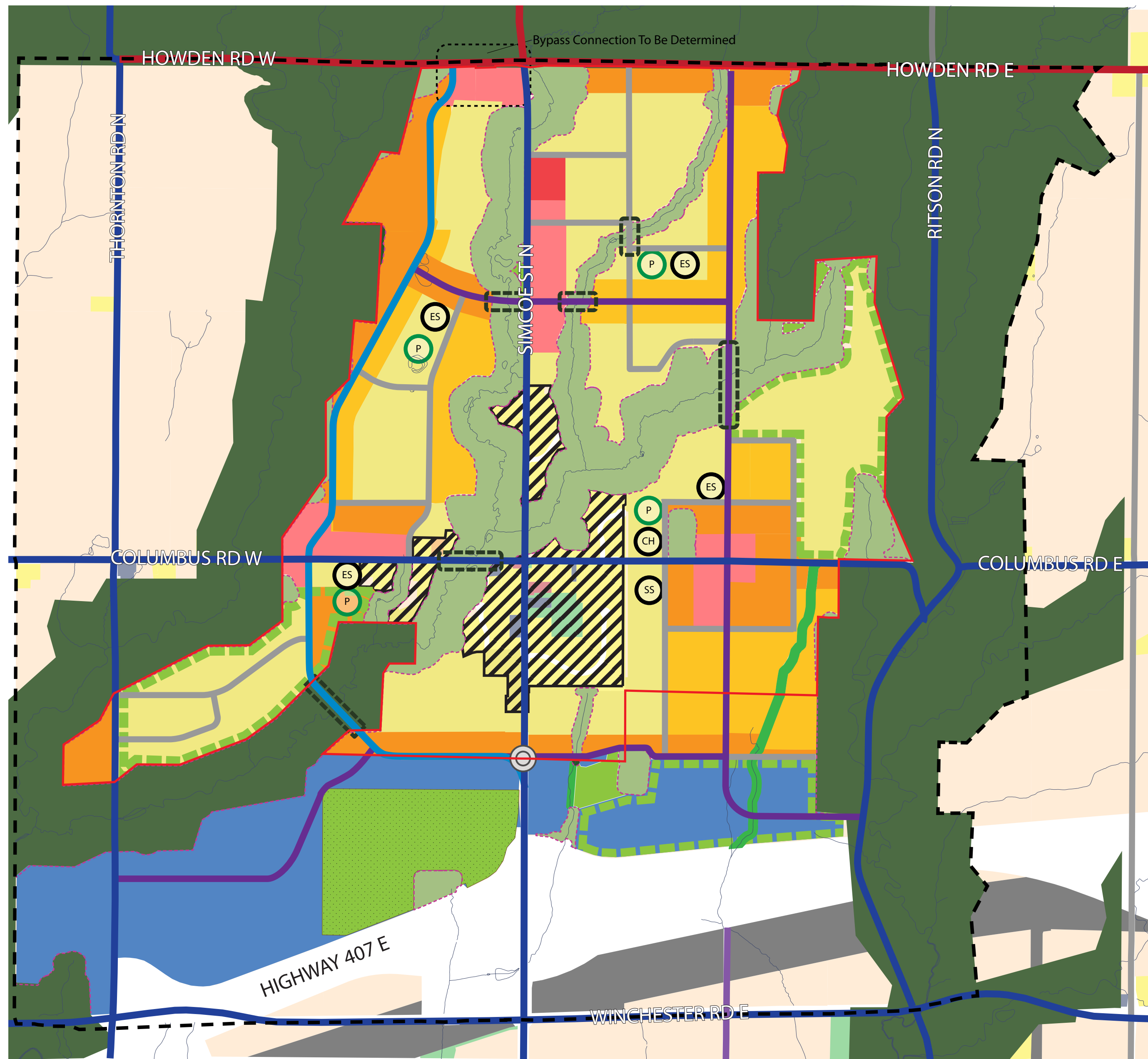
Alternative 1 Population and Jobs for Columbus Part II Plan Area by year 2041:
22,000- 32,000

PUBLIC INFORMATION CENTRE #3 - ALTERNATIVES

INTEGRATED COLUMBUS PART II PLANNING ACT & MUNICIPAL CLASS ENVIRONMENTAL ASSESSMENT ACT STUDY



ALTERNATIVE 2



In your groups, evaluate Alternative 2 based on the following categories. Assign a note taker to record key discussion points and comments made.

ROAD NETWORK

Are the locations and configurations of the roads appropriate? Why or why not?

LAND USES

Are the locations and types of land uses appropriate? Why or why not? Is anything missing? What are your thoughts on the land uses directly surrounding the Special Policy Area?

PARKS AND SCHOOLS

Are the locations and types of parks and schools appropriate? Why or why not? What is your preferred Community Park location? Why?

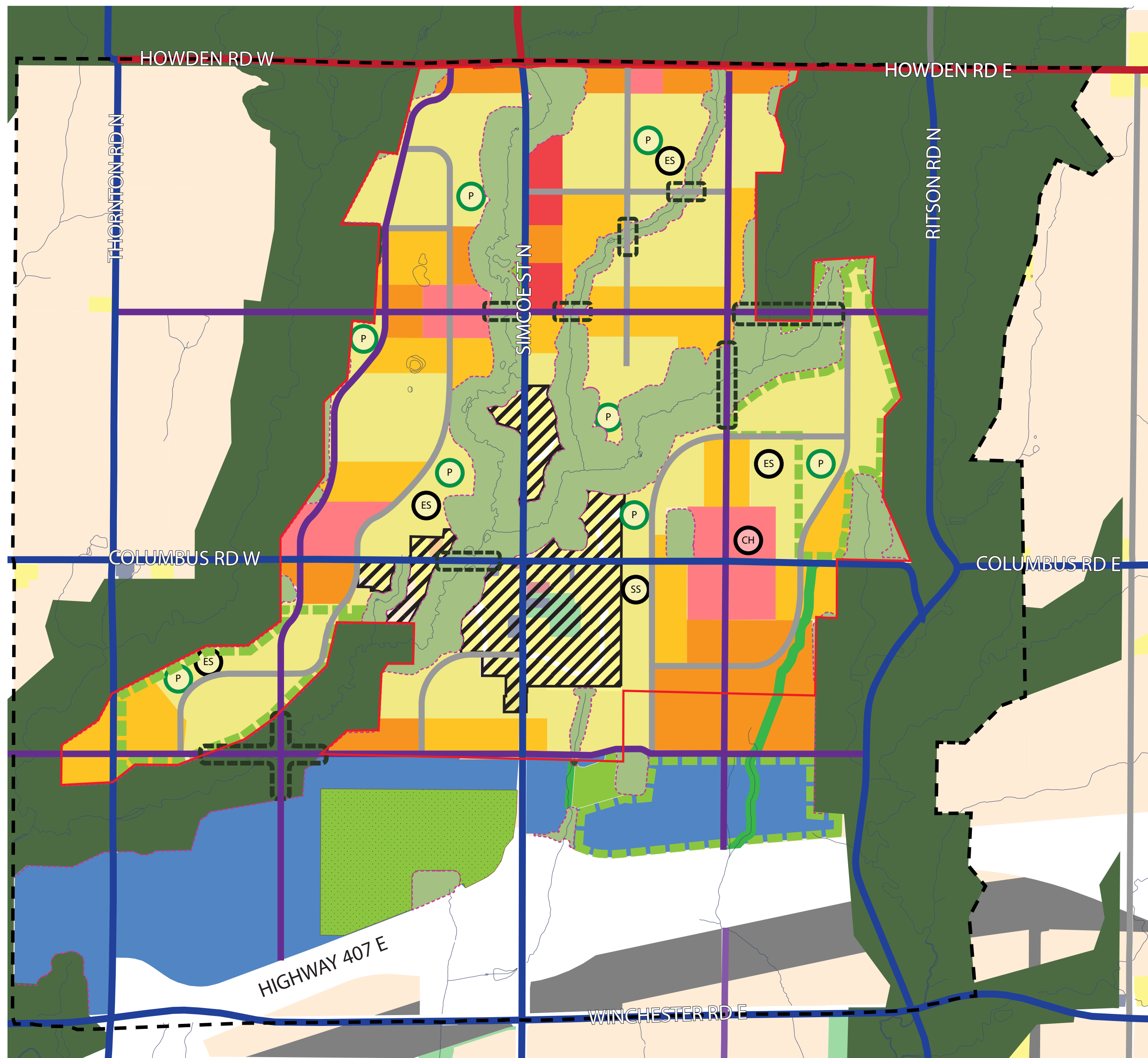
Alternative 2 Population and Jobs for Columbus Part II Plan Area by year 2041:
22,000- 32,000

PUBLIC INFORMATION CENTRE #3 - ALTERNATIVES

INTEGRATED COLUMBUS PART II PLANNING ACT & MUNICIPAL CLASS ENVIRONMENTAL ASSESSMENT ACT STUDY



ALTERNATIVE 3



Alternative 3 Population and Jobs for Columbus Part II Plan Area by year 2041:
21,000- 31,000

In your groups, evaluate Alternative 3 based on the following categories. Assign a note taker to record key discussion points and comments made.

ROAD NETWORK

Are the locations and configurations of the roads appropriate? Why or why not?

LAND USES

Are the locations and types of land uses appropriate? Why or why not? Is anything missing? What are your thoughts on the land uses directly surrounding the Special Policy Area?

PARKS AND SCHOOLS

Are the locations and types of parks and schools appropriate? Why or why not? What is your preferred Community Park location? Why?