

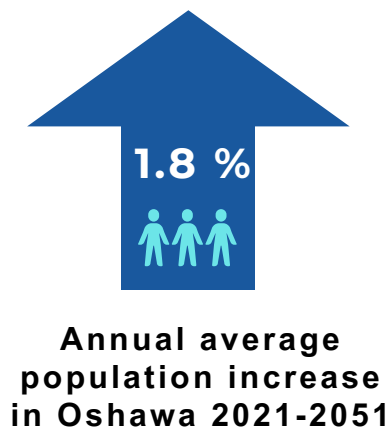
Intensification Education Guide

WHAT IS INTENSIFICATION?

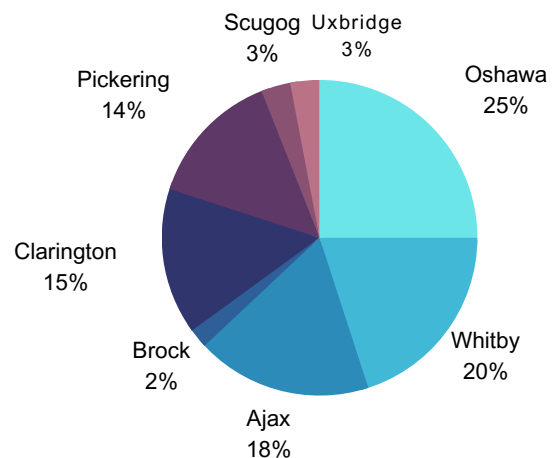
Intensification is development that allows for more people to live, work and connect within a specific area.

WHY IS INTENSIFICATION IMPORTANT?

Oshawa's population and jobs are expected to grow significantly between now and 2051.



2021 Durham Region Population by Area Municipality



Source: [Envision Durham, Growth Allocations Report](#)

WHAT ARE THE BENEFITS OF INTENSIFICATION?

Planning for intensification in appropriate areas maximizes the following benefits:

- Creating more housing choices
- Reducing the City's carbon footprint by using land efficiently
- Using tax dollars efficiently
- Promoting health and sustainability

WHAT DOES INTENSIFICATION LOOK LIKE?

Intensification comes in many different forms. It can happen through the redevelopment of a property to add new units, the development of a mixed-use building or the redevelopment of a brownfield site.

Before Intensification



After Intensification



www.oshawa.ca/en/city-hall/development-studies.aspx

Email us at planning@oshawa.ca